

MANAGEMENT DEVELOPMENT PROGRAMME



PART ONE

21-25 MARCH 2022



Club Management
Association of Europe
ENGLAND REGION

 **Circle Golf**
reading the greens

COURSE DATES

PART ONE

21-25 March 2022

VENUE

Marriott Victoria & Albert
Water Street
Manchester, M3 4JQ

MANAGEMENT
DEVELOPMENT
PROGRAMME



These courses form the first building blocks for those who wish to work towards taking their CCM exam.

Full details can be found by following the link below:
www.cmaeurope.org/education/mdp



OVERVIEW OF PART ONE

In these challenging economic times Club Managers are under greater pressure than ever from their committees, owners and members to create and implement business strategies that guarantee the continued success of their clubs.

Club Secretaries/Managers invariably come into the industry with some strong skills sets brought with them from a previous career, and this comprehensive training programme can now supplement these in each of the core competency areas of the modern club manager:

- **CLUB GOVERNANCE**
- **ACCOUNTING, FINANCE AND DATA ANALYTICS**
- **STRATEGY & LEADERSHIP**
- **GOLF, SPORTS, RECREATION AND WELLNESS**
- **FACILITIES MANAGEMENT**
- **MEMBERSHIP & MARKETING**
- **HUMAN RESOURCES & PROFESSIONAL RESOURCES**
- **INTERPERSONAL SKILLS**
- **FOOD AND BEVERAGE MANAGEMENT**
- **STATUTORY COMPLIANCE**
- **INFORMATION TECHNOLOGY**

PART 1

Part 1 is a week long course targeted in particular towards those managers who are either new to a post, recently appointed or simply want to enhance their knowledge so that they may better serve their club committee, owners and members. At the end of the week, those taking the course will have an excellent grasp of the basics in every area of club business, and will have established a valuable network of support for their career in this industry.



**MANAGEMENT
DEVELOPMENT
PROGRAMME**

PART ONE

CLUB GOVERNANCE

The structure, the process and the politics. You will explore best practice in this area and discover the common traits of the most effective volunteer committees.

MARKETING IN CLUBS

Gone are the days when a club could afford to ignore the opportunities presented by effective marketing campaigns. Whether your club is aiming to recruit members or attract visitors, this course will give you the basics of that plan, considering current trends, modern social media and the use of demographic tools.

STATUTORY COMPLIANCE & RISK MANAGEMENT

To help you sleep peacefully at night you need to know that you have all the basics covered with regard to Health & Safety, Employment Law and many other legal hurdles facing your club. Experts, familiar with private clubs in each of these areas of law, will be on hand to give you the knowledge that will help keep you and your Club out of court.

FOOD & BEVERAGE BASICS

Whether your operation is in house or outsourced, there is far more Member focus on this area of the business than ever before. Gaining knowledge of stock control, menu construction, bar set up and industry standards will enable you as a modern manager to balance the conflicting demands of delivering great food and beverage with achievable financial results.

INTRODUCTION TO CLUB ACCOUNTING AND BUDGETING

Financial Management is the most common competency area to trip up a Club Manager. This session will begin to build your knowledge, credibility and most importantly confidence so that you are better prepared to handle financial statements such as the profit & loss, balance sheet and budgets.

THE IMPORTANCE OF SERVICE IN CLUBS

In this competitive environment there is always a competitor willing to look after your customers. You will learn how to guide your staff so that they react correctly to the many opportunities they have to impress a customer each year, and to remind members why they should renew their subscription for the following year.



PART ONE

MANAGEMENT & DELEGATION

There is only one of you, so how can you create a supportive environment to help manage change in your club? You will learn what are the do's and don'ts of effective delegation in a club.

EFFECTIVE STAFF MANAGEMENT IN A CLUB

Managing staff in a club environment is especially challenging but is the key to high performance & member satisfaction. You will learn sound HR principles and management skills to support you in this goal.

THE BASICS OF STRATEGIC PLANNING

Without a plan your club can spend many hours and many pounds heading in the wrong direction. This course will help you start the process of plotting the best way forward for your club so that your management team and committee are pulling in the same direction.

FACILITY MAINTENANCE

Often overlooked until it is too late, your facilities need to reflect the short and long term aspirations of your club, taking into account customer demand, safety, legal requirements, financial restraints and many other factors. Learn to plan for the future through a combination of maintenance and capital investment programmes.

EFFECTIVE MEMBER COMMUNICATIONS

Members demand up to date, well written and appropriate communication, which will consume much of the club managers daily life. You will be given techniques to best manage this part of your job in the context of a modern club utilising modern technology.

CAREER DEVELOPMENT & PROFESSIONALISM

We are lucky to work in places where our customers choose to spend their leisure time, but despite that fact, job satisfaction can be hard to find. We will establish how to obtain the correct training and focus to cement the trust of your committee and your members.

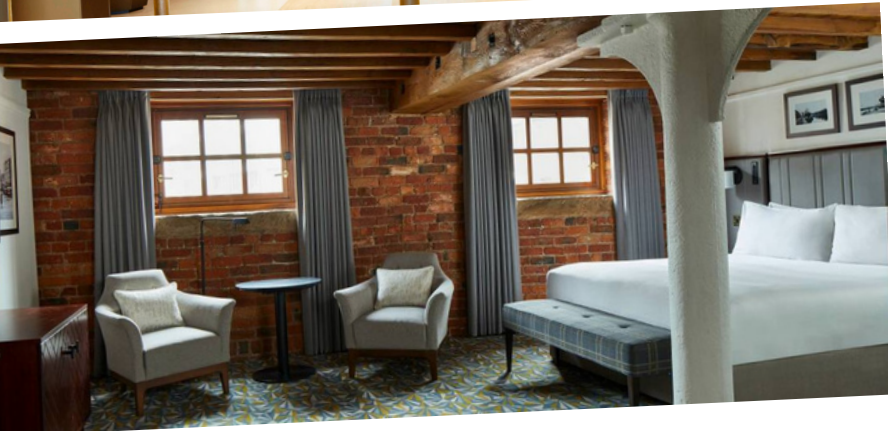


MARRIOTT VICTORIA & ALBERT

Water St, Manchester
M3 4JQ

www.marriott.co.uk/hotels/travel/manva-manchester-marriott-victoria-and-albert-hotel/

The Grade II listed manchester marriott victoria & albert Hotel invites you to discover one of england's most vibrant cities in brilliant style. Perfectly situated in the heart of manchester city centre, near famous attractions and a short walk from Deansgate, the hotel welcomes guests with intuitively designed accommodation and wonderfully personalized touches. Settle in to your guest room or suite, which offers deluxe pillow top bedding and a flat- screen Tv, in addition to an ergonomic workspace and high-speed internet. begin or end your day with a meal at The riverside restaurant, or sip a cocktail at the v&a Lounge. With impeccably appointed venue space and modern event facilities, we offer one of manchester city centre's premier destinations for meetings and events. We place you just moments away from some of the area's best-known landmarks, including the Palace Theatre.



**MANAGEMENT
DEVELOPMENT
PROGRAMME**

TESTIMONIALS

"MDP Part 1 is set out in a way in which delegates can interact with one and other sharing ideas and experiences which are usually applicable to your specific club. The speakers CMAE use are fantastic with vast amounts of knowledge in their specific sector. Over the course of the week I learned many great take home points and made friends for life, whom I will be continuing my development pathway with in the future. I cannot recommend this highly enough." - **Dale Corrin, Assistant Manager, Stanton on the Wolds Golf Club**

"I didn't really know what to expect when embarking on MDP1, but what I can say is that it blew my mind. The content was fantastic, the speakers and educators where the best in their field and provided me with a real desire to go back to my club and make a difference. Sharing experiences with other managers was the best part. To share real life experiences and build a network of like-minded people was really uplifting and it has started to change the way that I approach my own job, for the better. A week I'll never forget, can't wait for MDP 2! - **Aaron Bullock, Corporate Manager, Remedy Oak Golf Club**

"The CMAE program is an eye opening experience, the breadth of information and the quality of presenters are second to none. The courses are must for any club manager looking to expand their knowledge". - **James Brockington, Golf Operations Manager, Henley Golf Club**

"MDP1 was a fantastic experience, learning and networking with a great bunch of like-minded professionals all looking to enhance career and professional development. All of the speakers were very passionate and gave a great insight into all aspects of club management. A full-on week of learning, which increased my knowledge and has given me invaluable connections for my future within the Golf industry. I would definitely recommend to any manager looking to further their career" - **Richard Johnstone, Course Manager, Nairn Dunbar Golf Links**



MANAGEMENT
DEVELOPMENT
PROGRAMME

PRESENTERS

The MDP pathway has been designed by the club industry for the club industry. The curriculum is delivered by external specialists with a history of working in the club industry and experienced qualified Club Managers.

Bill Sanderson	Business Consultant	bill@thebusinessperformancecoach.com
Steven Brown	InnFormation	herinn@aol.com
Jules Murray	Educator, Coach & Speaker	jules@spideronthewall.com
Kevin Fish CCM	Industry Professional	kevin@ccl.services
Torbjorn Johansson	CMAE	torbjorn.johansson@cmaeurope.org

Presenters subject to availability

PRICE

Course	Dates	Full Rate	CMAE Rate
Part 1	21-25 March 2022	£1,780	£1,600

CANCELLATIONS AND AMENDMENTS TO BOOKINGS

- All requests for cancellations and/or transfers must be received in writing.
- Changes will become effective on the date of written confirmation being received.
- The appropriate cancellation charge will be applied to the cost of your booking, as shown below.
- Any extenuating circumstances will be considered, at CMAE's discretion.

CALENDAR DAYS NOTICE BEFORE THE START DATE OF THE COURSE	REFUND APPLICABLE
29 calendar days or more	Full refund minus a £30 plus VAT administration fee
Between 15 and 28 calendar days (inclusive)	50% refund minus a £30 plus VAT administration fee
Between 1 and 14 calendar days (inclusive)	No refund will be given
Failure to attend	Treated as late cancellation and no refund given

- In the event that an individual named on the booking form cannot attend, we will accept substitution of another delegate on the condition that written notification of the substitution has been received by us prior to the course date and an administration fee of £30 plus VAT has been paid.
- If the individual named on the booking form is unable to attend, and cannot or does not wish to transfer their place to another individual, then a part of the fee paid (after deduction of any relevant cancellation fee) may be accepted as payment towards a place on the same or another course that takes place within 12 months following the originally booked event.

BOOKING FORM

MANAGEMENT
DEVELOPMENT
PROGRAMME

NAME: (block capitals please)

CLUB: (block capitals please)

POSITION AT CLUB:

PHONE NUMBER FOR WHATSAPP:

E-MAIL:

CMAE MEMBERSHIP NO:

POSTAL ADDRESS:

PLEASE SELECT ONE OF THE FOLLOWING OPTIONS

MANAGEMENT DEVELOPMENT PROGRAMME - PART 1

21-25 March 2022

PLEASE SELECT RELEVANT PRICE OPTION:

FULL RATE £1,780

Includes course, accommodation, CMAE membership, VAT & all course materials

CMAE RATE £1,600

Includes course, accommodation & all course materials

SUNDAY NIGHT ACCOMMODATION SUPPLEMENT - £105

Please tick this if you require accommodation on the Sunday night

PLEASE SELECT PAYMENT METHOD:

BANK TRANSFER

CREDIT / DEBIT CARD

Bookings are not guaranteed until payment is received in full.

Please read the information on cancellations and amendments on previous page.

PLEASE RETURN BOOKING FORMS TO:

office@cmaeurope.org

RULES OF ATTENDANCE

When attending a Management Development Programme for CMAE there is a demand of being present in the room during the 5-day programme. A delegate needs to attend each session in order to get credits for the entire week.

Expected circumstances

If a delegate knows that he/she will be away for any reason during the week (more than 1 minute), he/she needs to inform the facilitator before starting the course on day 1. It could be communicated with the CMAE office and in certain cases rules could be agreed upon between CMAE and the delegate to make up for the lost time due to the expected circumstances. More than 60 minutes will be dealt by on individual basis depending on what day of the week and the content of that day. Decision will lie with Director of Education.

Unexpected circumstances

As problems/issues can happen during 5 days (or before and after), the delegate might have unexpected circumstances with health issues, transport or family problems that must be dealt with. In those occasions, MDP facilitator will be responsible to make a plan together with the delegate to solve any issues that might occur from this unexpected issue.

Leaving early / Arriving late

CMAE is running a 5-day-programme and you are expected to attend from start to finish. The delegate must look at the starting time as well as the finishing time and is not allowed to leave early (or arrive late) because of then disturbing the education and all delegates on the course. If something is planned – see “Expected circumstances”. Travel problems – see “Unexpected circumstances”.

Consequences of not attending

If for any reason not communicated before or see “unexpected circumstances” the delegate misses more than 60 minutes of the content, he/she will not get the certificate for the week.

